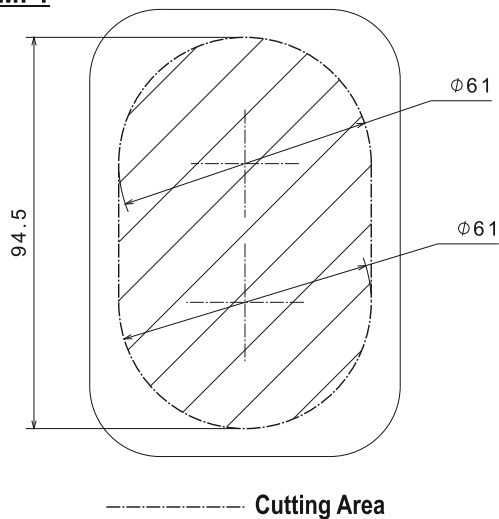


Waterproof Rating IP67

DIAGRAM: 1



INSTALLATION GUIDELINES

Diagram: 1

- 1.1) Stick the drilling template in the desired mounting position.
- 1.2) Drill the cutout area.

IMPORTANT: Ensure that you have access to the area below the hole for tightening the screws of the joystick's mounting system.

Diagram: 2

- 2.1) Move the joystick towards the hole to fit it in place. Make sure the sealing gasket is positioned between the joystick and the mounting plane.

Diagram: 3

- 3.1) Position the mounting bracket over the bolts and tighten the nuts (see Diagram 3A).

IMPORTANT: If the mounting plane is too thick, put the mounting bracket upside down (see Diagram 3B). If needed, modify the bracket to suit the installation requirements.

DIAGRAM: 2

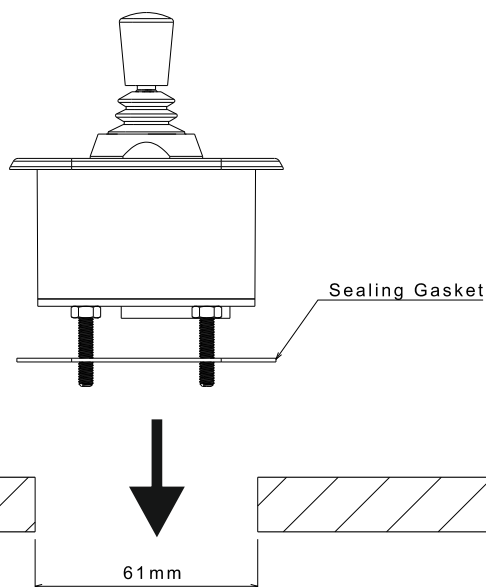
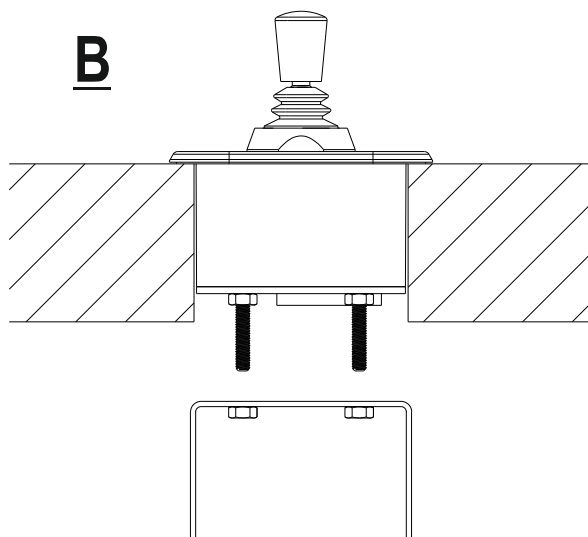
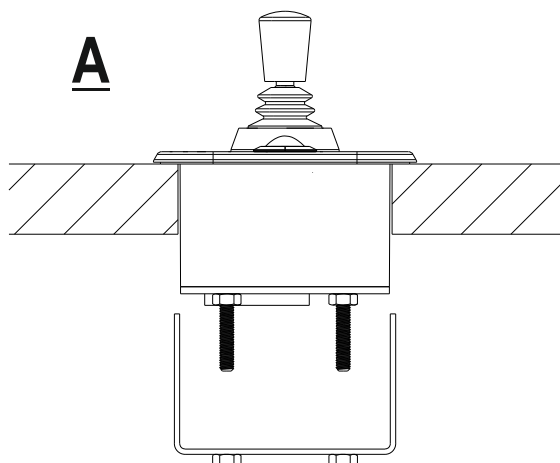
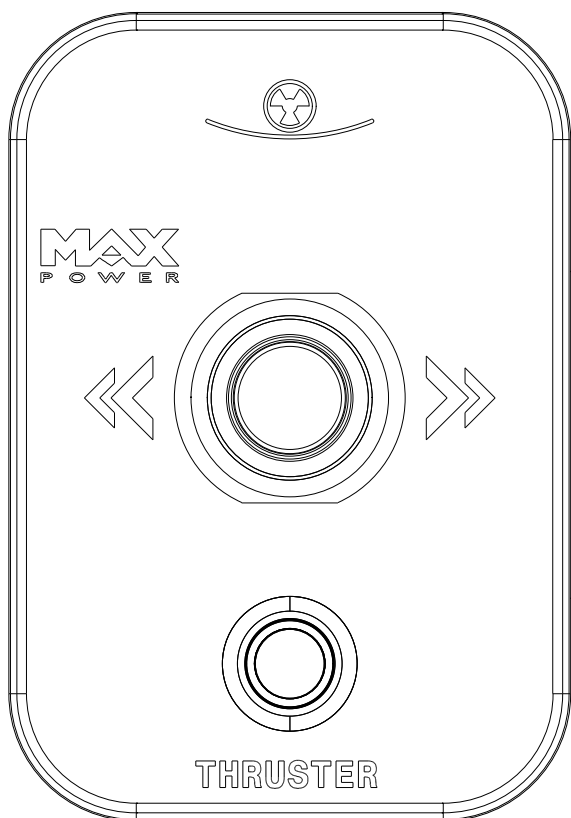


DIAGRAM: 3





BLUE
BROWN
YELLOW
BLACK
WHITE
RED

6 ways male WAGO

Cable	Operation
Blue	Right Position
Brown	Left Position
Yellow	Buzzer (-)
Black	Switch's LED - Button
White	Switch ON-OFF
Red	Power supply positive + Buzzer (+)